

CITTA' DI VITERBO  
SETTORE VI

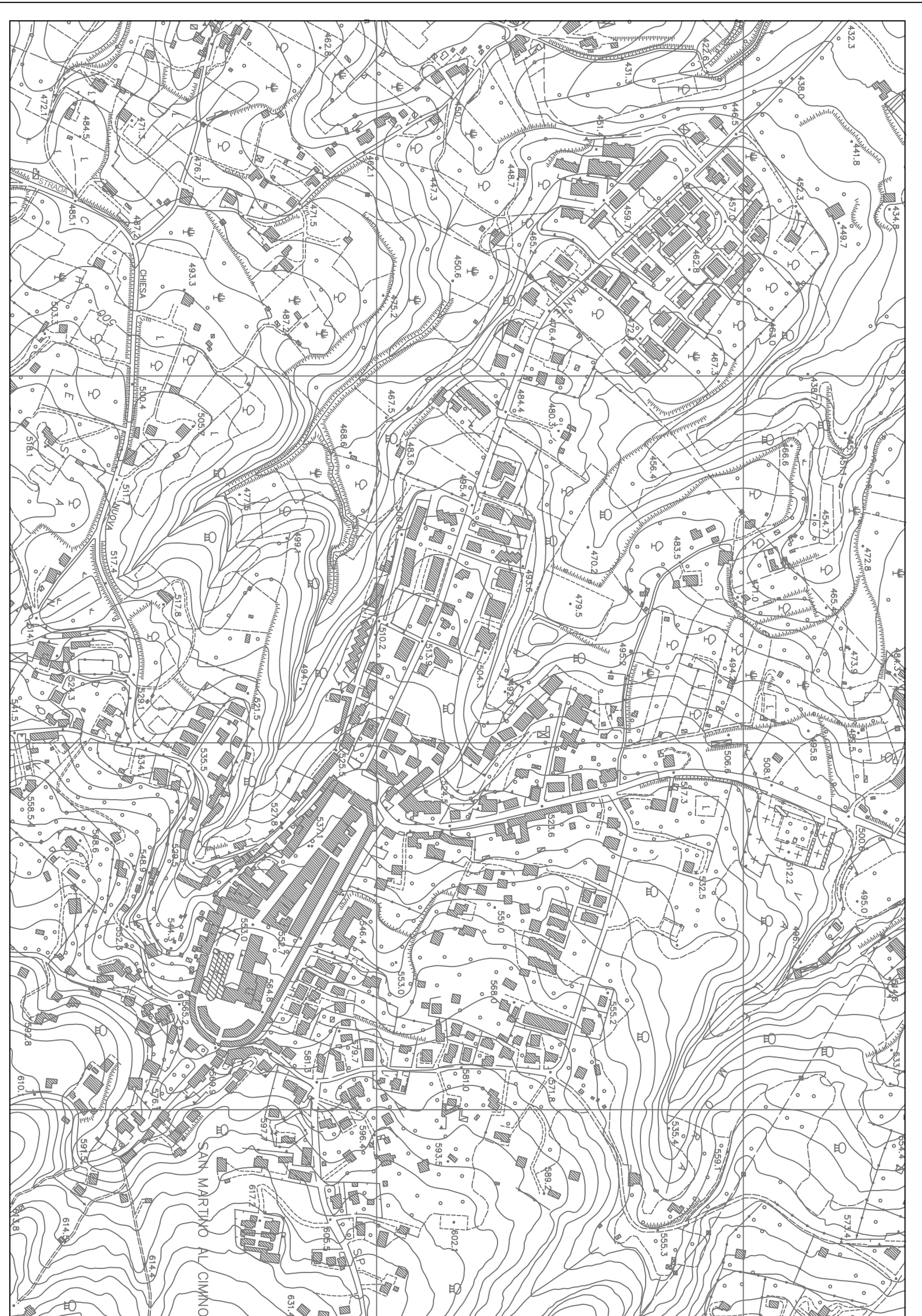
LAVORI DI MANUTENZIONE  
DELLE STRADE COMUNALI  
ANNO 2015  
PROGETTO DEFINITIVO/ESECUTIVO

ELABORATO GRAFICO

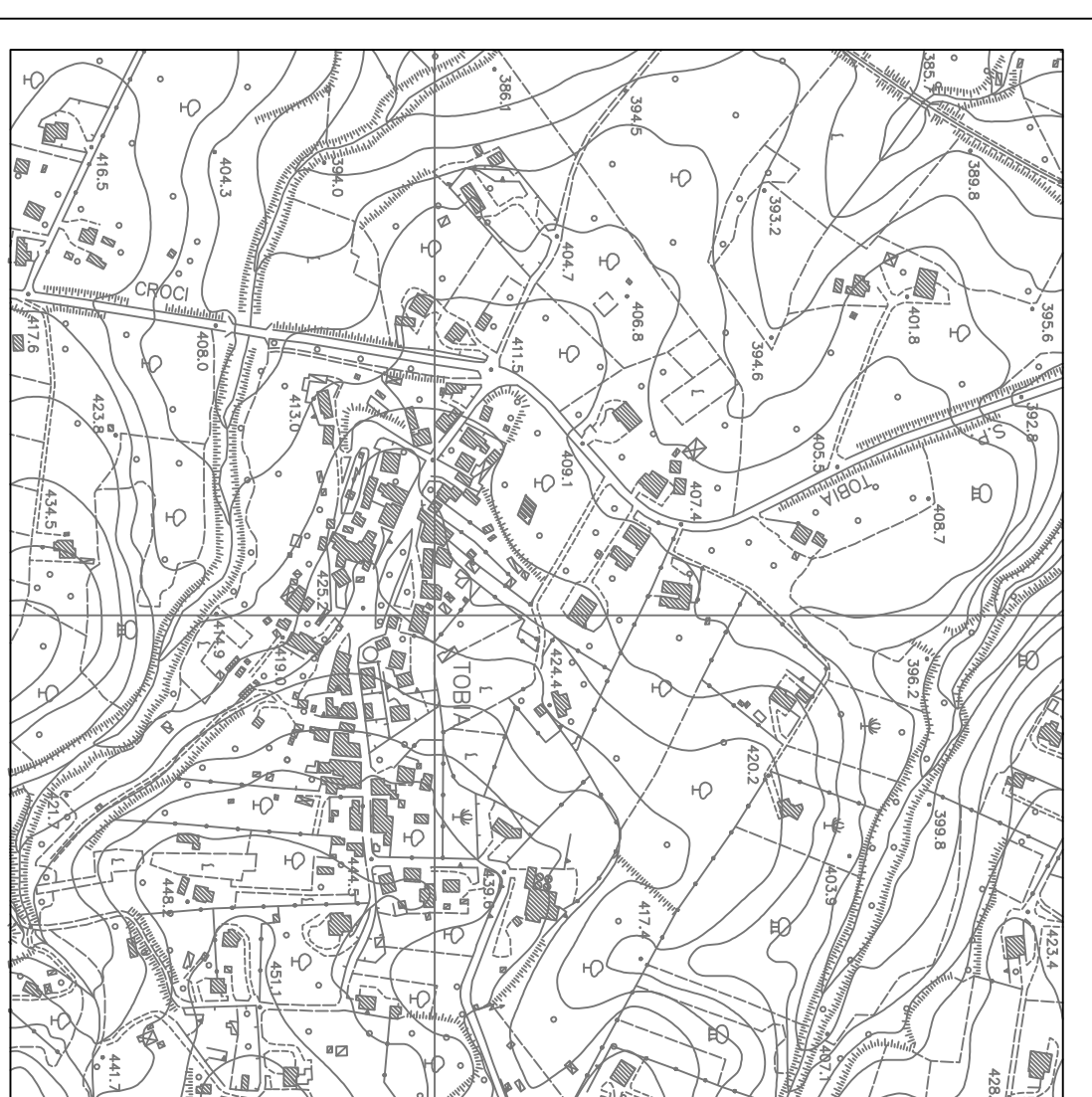
3

PROFUGI  
ARCH. MASSIMO GAL  
GIOM. EMANUELE RICCI  
GIOM. SIMONE MORICCI

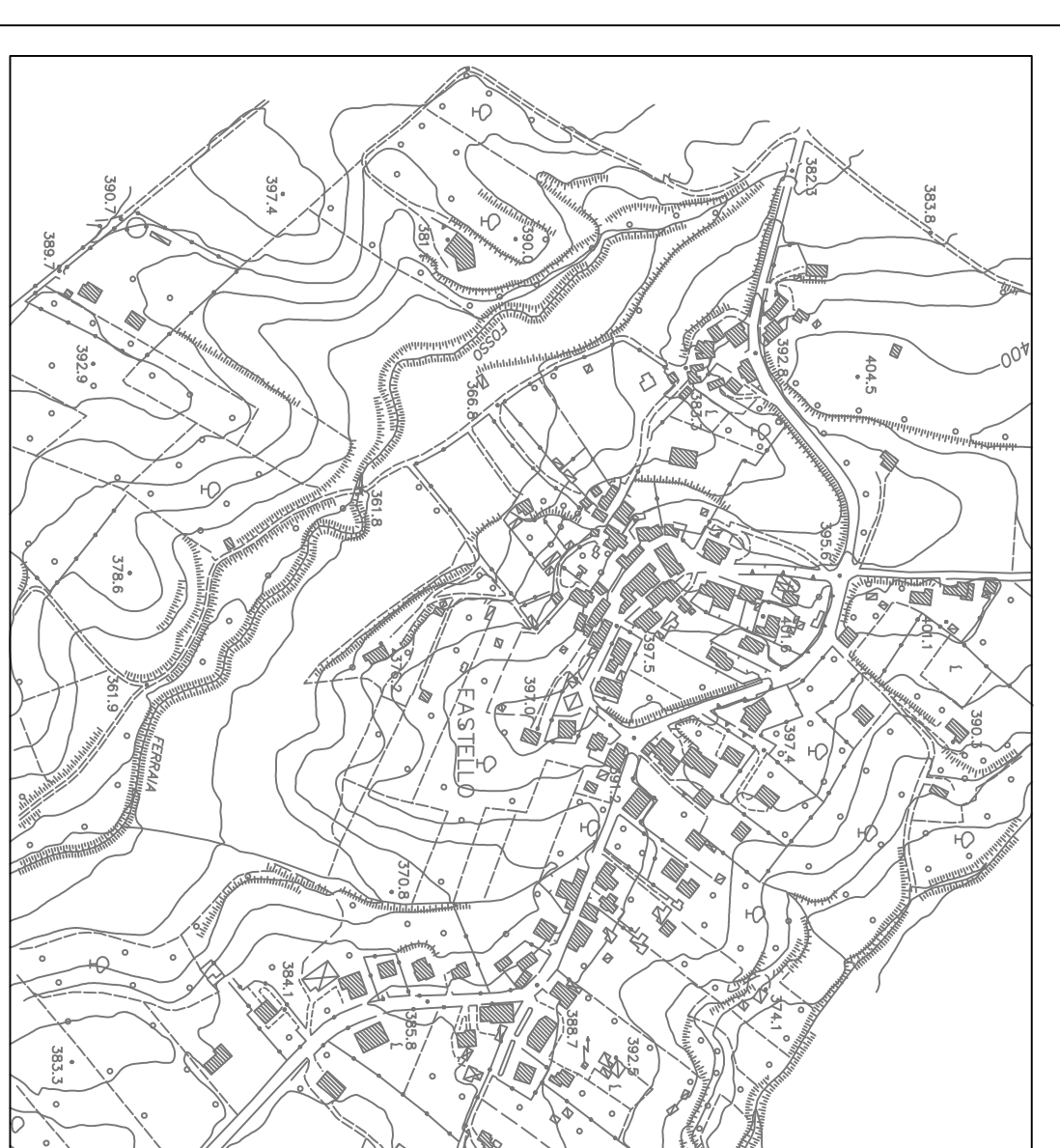
V. IL RESPONSABILE DEL PROCEDIMENTO.



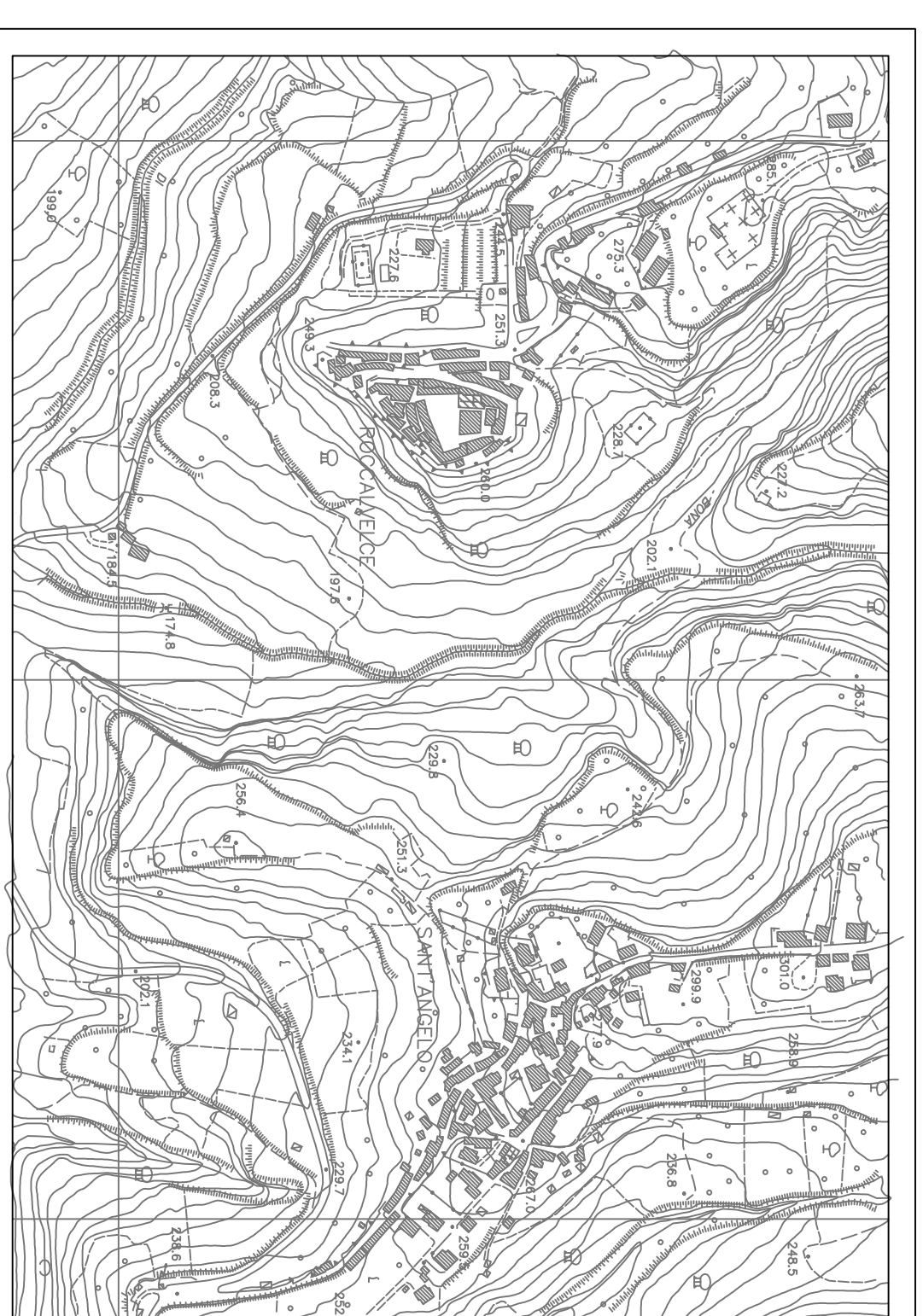
SAN MARTINO AL CIMINO



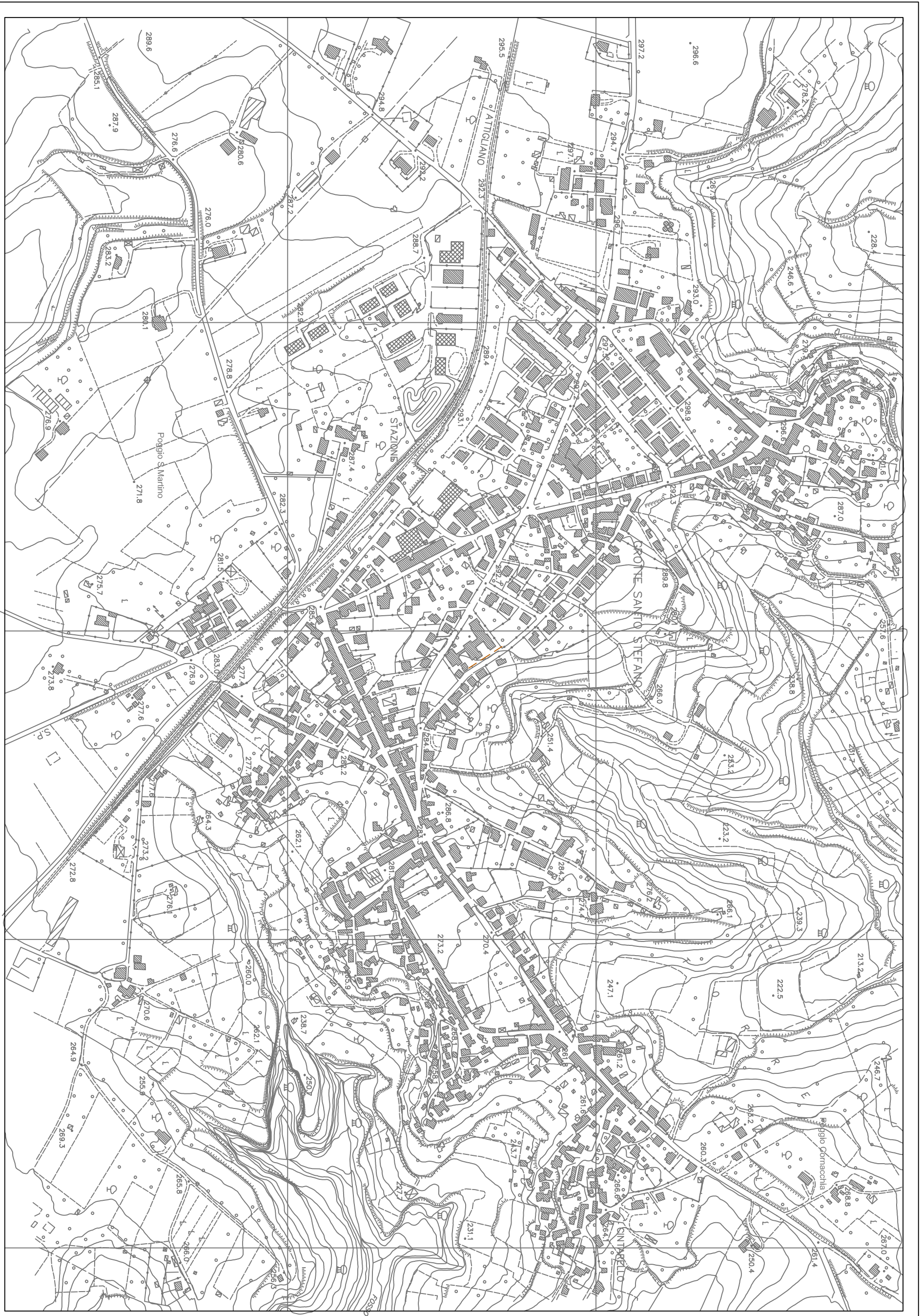
TOBIA



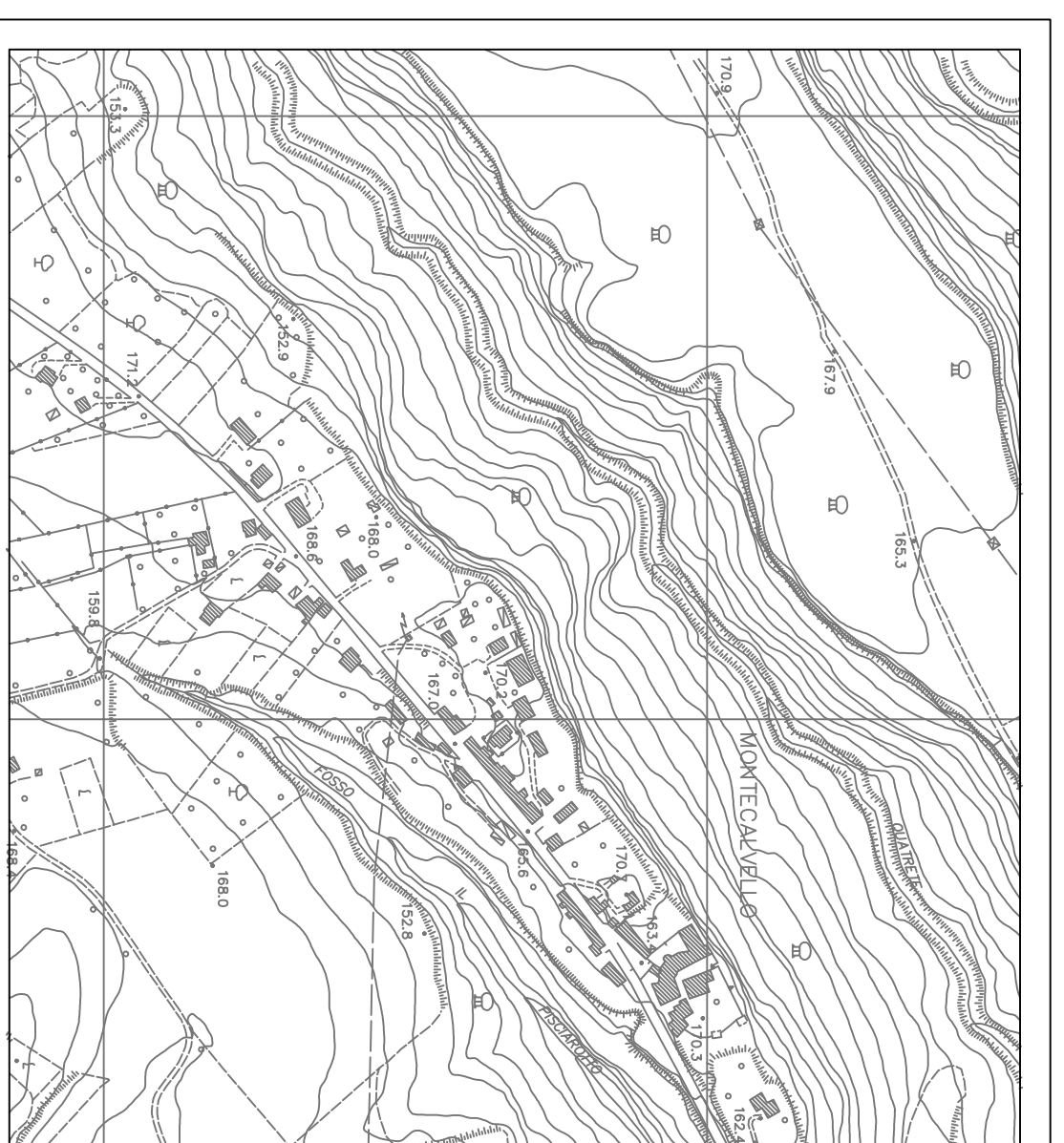
FASTELLO



ROCCALVECE E SANT'ANGELO



GROTTE SANTO STEFANO



MONTECALVELLO



LA QUERCIA - BAGNAIA